

DEPARTMENT OF WATER SUPPLY • COUNTY OF HAWAII

345 KEKUANAOA STREET, SUITE 20 • HILO, HAWAII 96720

TELEPHONE (808) 961-8050 • FAX (808) 961-8657

October 30, 2003

TO: HOLDERS OF WATER SYSTEM STANDARDS 2002
FROM: Milton D. Pavao, Manager
SUBJECT: **WATER SYSTEM STANDARDS 2002**
AMENDMENT NO. 1

Please insert the enclosed documents in your publication of the subject Water System Standards, which you received from this office.

Should you need more information, please contact Mr. Glenn Ahuna, Engineering Division Head, at (808) 961-8070.

Sincerely yours,

Milton D. Pavao, P.E.
Manager

ON:dms

Enc. - "AMENDMENT NO. 1 TO THE 2002 WATER SYSTEM STANDARDS" (3 sheets)

copy - Board of Water Supply, City and County of Honolulu
Department of Water Supply, County of Maui
Department of Water Supply, County of Kauai

... Water brings progress...

September 16, 2003

TO: ALL CONCERNED

FROM: MILTON D. PAVAO, MANAGER

SUBJECT: AMENDMENT NO. 1 TO THE 2002 WATER SYSTEM STANDARDS

The following revisions shall be made to the 2002 Water System Standards:

1. Division 400, Section 403 – Standard Details

a. Section V. Meter Boxes, and 3-Inch and Larger Meters (M)

1) Subsection B, Compound, Detector Check, Turbine and FM Meters

a) Standard Detail No. M21, “MFM-MCT Meter and Box Installation”

Effective immediately, all MFM-MCT Meter Box Cover Plates shall be constructed according to Standard Detail M21R, which replaces M21. The intent of this revision is to provide two, ¾-inch wide by 21/2-inch long lifting holes for each box cover plate section, replacing the two lifting holes per plate as shown on the Detail (M21) drawing. All applicable references to the MFM-MCT Meter and Box Cover Plates in the Water System Standards shall imply Standard Detail M21R.

MFM-MCT Meter Box Cover Plates constructed to Standard Detail M21 specifications with the two lifting holes will be allowed for approved projects already started and for which box cover plates have been ordered.

2. Division 200, Section 202.02 – Mechanical Joint

Effective immediately, corrosion-resistant coated Cor-Ten® T-Bolts and Nuts are approved for use in all mechanical joint installations.

The approval of the coated Cor-Ten® T-Bolts and Nuts and other approved equal bolts and nuts does not preclude the use of silicon bronze (ASTM F467 and F468) stainless steel (ASTM F593 and F594, type 316) bolts and nuts for mechanical joint pipe and fittings as required in the applicable sections of the Standards.

To allow material suppliers to exhaust their current stock, (uncoated) Cor-Ten® T-Bolts and Nuts may be used until six (6) months after the effective date of this amendment. After that date, Cor-Ten® T-Bolts and nuts with approved corrosion-resistant coating only shall be allowed.

3. Division 400, Section 402 – Approved Material List

Effective immediately, the following materials shall be added to the Approved Material List.

a. Section I. Pipes and Appurtenances

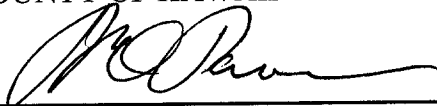
1) Subsection I, Couplings – Pipelines

- a) Manufacturer: Mueller Company
Catalog or Model No.: MaxiStep Coupling, MSC and MFC Series for 6-inch diameter.
 - 2) Subsection J, Tapping Sleeves
 - a) Manufacturer: Mueller Company
Catalog or Model No.: H-304 Stainless Steel Tapping Sleeve, 4-inch through 24-inch diameter.
 - 3) Subsection M, Flanged Adapters
 - a) Manufacturer: Mueller Company
Catalog or Model No.: Viking-Johnson Dismantling Joint, Model No. DJR.
- b. Section III. Service Laterals, Fittings and Appurtenances**
- 1) Subsection A, Ball Corps
 - a) Manufacturer: A.Y. McDonald Manufacturing Company
Catalog or Model No.: 3128B
 - 2) Subsection D, Service Lateral Fittings
 - a) Manufacturer: A.Y. McDonald Manufacturing Company
Catalog or Model No.: Mac-Pak 4753-22, 4754-22, and 4758-22.
 - b) Manufacturer: Mueller Company
Catalog or Model No.: Pack Joint Connection.
 - 3) Subsection F, Ball Meter Valves
 - a) Manufacturer: Mueller Company
Catalog or Model No.: P-243500-216, inlet 1-inch CTS Pack Joint and outlet 5/8-inch meter swivel nut.

End

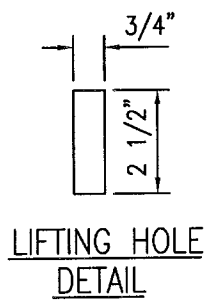
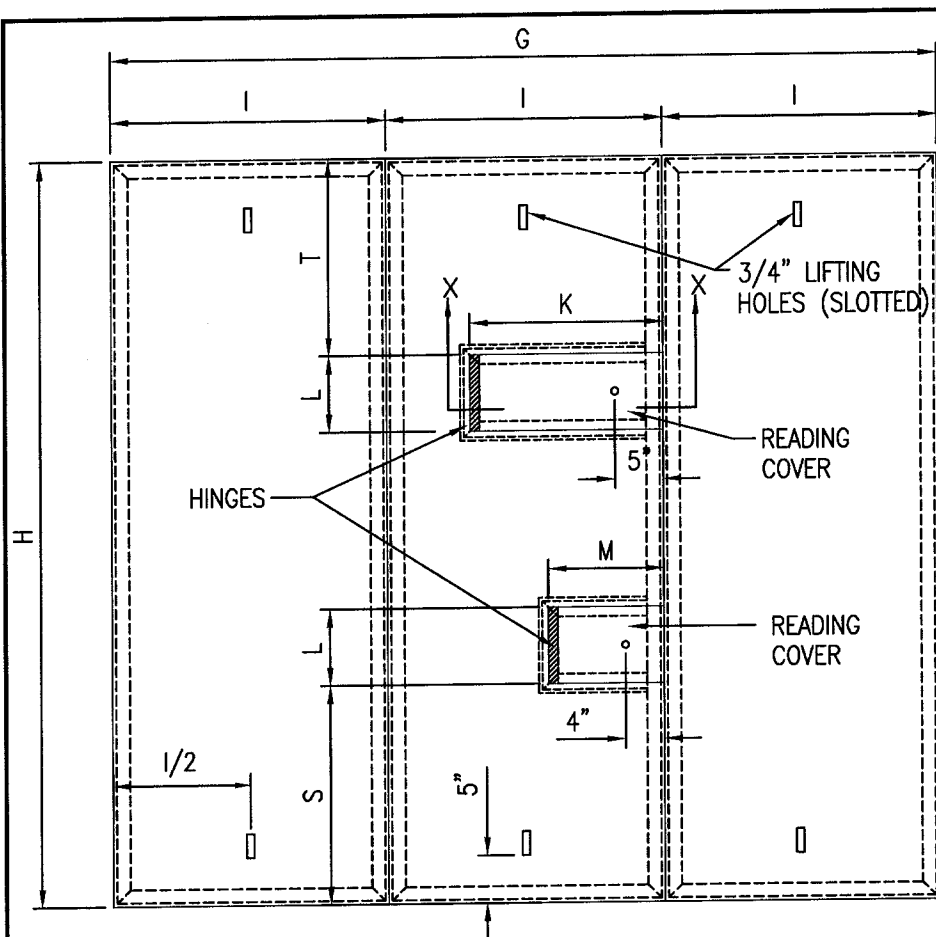
BY AUTHORITY OF THE DEPARTMENT OF WATER SUPPLY
COUNTY OF HAWAII

By _____


Manager

Effective Date of Amendment: September 12, 2003

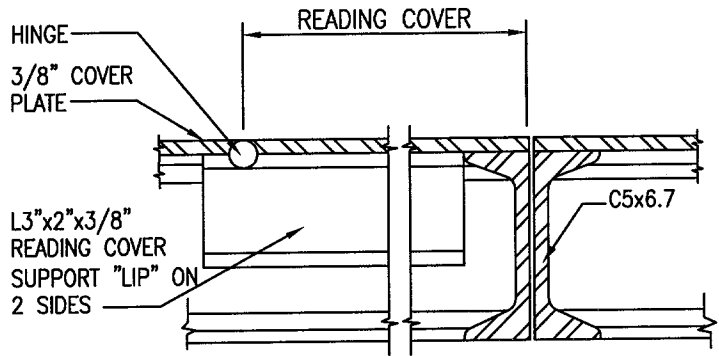
Attachment – Standard Detail No. MR21R (MFM-MCT METER AND BOX INSTALLATION)



- NOTES:**
1. READING COVERS SHALL BE LOCATED DIRECTLY OVER THE METER REGISTERS. LOCATIONS WILL VARY W/ THE TYPE OF METER TO BE INSTALLED.
 2. SEE M15 FOR READING COVER DETAILS.
 3. ALL ANGLES, CHANNELS, & COVER PLATES SHALL BE HOT DIPPED GALV. AFTER FABRICATION.
 4. FOR 2-1/2" COPPER BYPASS LINES, INSTALL 2" BALL CORP. WITH APPROPRIATE 2"x2-1/2" FITTINGS.

PLAN

DIMENSION TABLE				
METER SIZE (IN INCHES)				
	3	4	6	8
A	80	80	96	96
B	72	72	80	88
C	28	28	28	32
C	44	44	52	56
D	33	33	45	53
E	2	2	2 1/2	2 1/2
F	4 x 3	6 x 4	8 x 6	12 x 8
G	69 3/4	69 3/4	85 3/4	85 3/4
H	61 3/4	61 3/4	69 3/4	77 3/4
I	23 1/4	23 1/4	28 5/8	28 5/8
J	18	18	20	16
K	15	15	15	20
L	8	8	8	8
M	12	12	12	12
N	26	27	28	36
O	16	17	18	19 1/2
P	50	52	54	63 1/2
Q	30	30	30	30
R	2	2	2	2
S	18 7/8	18 7/8	18 7/8	22 7/8
T	18 1/8	17 1/8	21 1/4	20 3/8
Ø	4	6	8	12



SECTION X-X

SEPT. 2003
2003
REVISION

HAWAII	MFM-MCT METER AND BOX INSTALLATION SCALE: NTS	STANDARD DETAILS	M21R
--------	---	---------------------	-------------