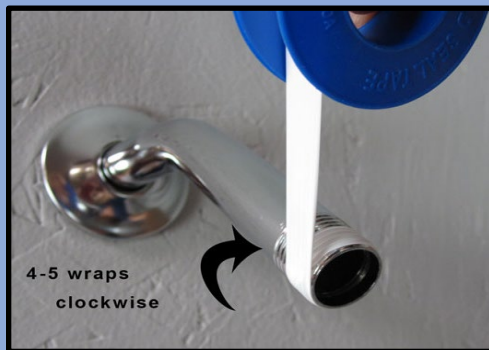


SAVE WATER, SAVE MONEY

Install a Low-Flow Showerhead

Installing a low-flow showerhead is an easy way to save water and money.

Learn more ways to save water and save money at www.hawaiidws.org.



DEPARTMENT OF WATER SUPPLY • COUNTY OF HAWAI'I

345 KEKŪANAŌ'A STREET, SUITE 20 • HILO, HAWAI'I 96720

TELEPHONE (808) 961-8050 • FAX (808) 961-8657

EMAIL: dws@hawaiidws.org • WWW.HAWAIIOWS.ORG



...Water, Our Most Precious Resource... *Ka Wai A Kāne...*

The Department of Water Supply is an Equal Opportunity provider and employer.

You will need:

- Low-flow showerhead
- Adjustable wrench
- Old toothbrush
- Plumbing tape

Step 1:

Obtain a new showerhead that flows no more than 2 gallons per minute (GPM).

Step 2:

Use wrench to remove old showerhead by turning counterclockwise.

Step 3:

Brush the pipe threads.

Step 4:

Wrap new plumbing tape clockwise around the pipe threads.

Step 5:

Twist on the new showerhead by turning clockwise. Tighten with wrench if necessary.