

## "Property Side"

water meter valve

(Turn the water meter 90 degrees clockwise to stop the flow of water)

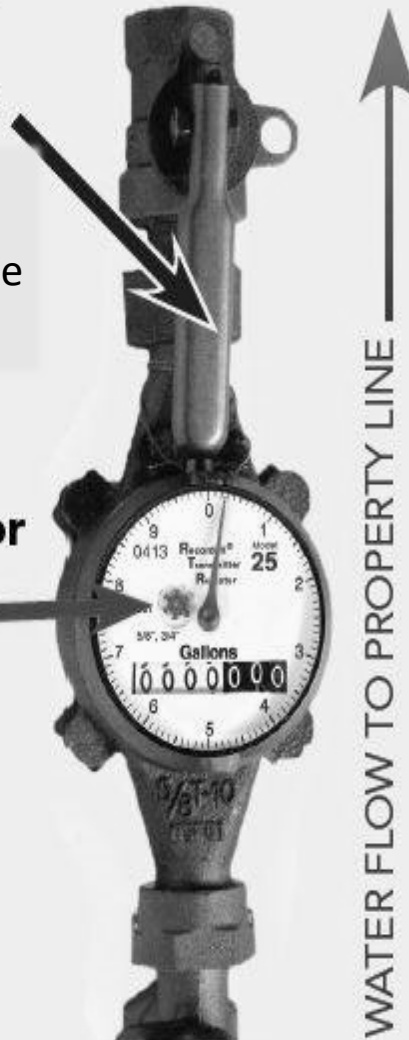
**Low Flow Indicator (LFI)**

## "Street Side"

water meter valve

(for DWS use only)

Water meter models may vary.



**You may need to turn off your waterflow before performing household plumbing repairs. To do this, perform the following:**

### Step 1:

Locate your water meter. It will be in a concrete box placed near the road fronting your property.

### Step 2:

Remove the cover, taking care because it is heavy.

### Step 3:

Turn off your water meter valve. Do this by locating the property side of the meter and slowing turning only this valve 90 degrees clockwise.

### Step 4:

To restore water, turn the valve 90 degrees counterclockwise and carefully replace the cover.



## Department of Water Supply

(808) 961-8050

For after-hours water emergencies, please call  
(808) 961-8790

[www.hawaiidws.org](http://www.hawaiidws.org)

[dws@hawaiidws.org](mailto:dws@hawaiidws.org)

[@hawaiiDWS](https://www.facebook.com/hawaiiDWS)



County of Hawai'i  
**DEPARTMENT OF  
WATER SUPPLY**

KA WAI A KĀNE

*Water, Our Most Precious Resource*