

# County of Hawai'i DEPARTMENT OF WATER SUPPLY

## 6th ANNUAL Keiki Water Conservation POSTER CONTEST



### How to enter:

1

View "Save Water to Help the Earth" video under the "Conservation" link at [www.hawaiiidws.org](http://www.hawaiiidws.org).

2

Create your **original artwork** (see rules and guidelines below).

3

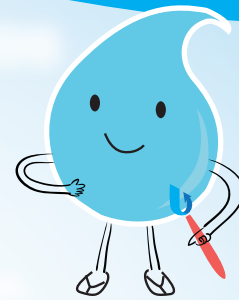
Fill out the attached entry form and submit poster by mail or in-person to any DWS office island-wide by **Friday, April 26, 2024**.

## 2024 Contest Theme: Water Is Life

**Who:** Open to all Hawai'i County K-6 students

**What:** 11" x 17" Water Conservation Poster

- Horizontal (landscape format), white poster paper
- Any media except chalk, charcoal or oil-based crayon
- Only original artwork (no computer graphics, photographs, 3-D objects) by a single individual (no collaborative work). Plagiarism will result in disqualification.
- Please submit poster flat, not rolled
- Student identification must be **clearly listed** on the back, bottom right corner of the poster, including **Full Name, School, Grade, and Teacher's Full Name**
- Each poster must be submitted with an accompanying entry form (see back of flyer). If a teacher/parent is submitting multiple entries, only one form per grade is needed
- Entries should focus on **fresh drinking water** (not ocean water or bottled water)



**When:** **By Friday, April 26, 2024**

**Where:** Mail or drop off at: **Department of Water Supply**

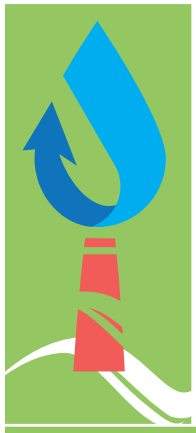
**345 Kekūanaō'a Street, Suite 20, Hilo, HI 96720**

Entries may also be dropped off at DWS offices in Kona or Waimea. See entry form for addresses.

**Why:** **We all must protect our most precious resource - water**

- Let's learn to conserve our precious water resources for future generations.
- Water is essential for all life and is a limited resource that cannot be replaced.
- Water truly is our most precious resource!

Prizes will be awarded to the two top entries, as chosen by judges, from each grade level. The Department of Water Supply may reproduce winners' names and their entries, which will be announced at a future Water Board meeting. Posters may be picked up from the DWS' Hilo Office after June 15, 2024. The office is open from 7:45 a.m. to 4:30 p.m. weekdays, excluding holidays, and is located at 345 Kekūanaō'a Street. Posters not picked up by July 31, 2024, will be discarded. For questions or more information, please contact DWS at (808) 961-8050, visit [www.hawaiiidws.org](http://www.hawaiiidws.org) or email [dws@hawaiiidws.org](mailto:dws@hawaiiidws.org).



# County of Hawai'i

## DEPARTMENT OF WATER SUPPLY

### 6th ANNUAL

## Keiki Water Conservation Poster Contest

### ENTRY FORM

**DEADLINE: FRIDAY, APRIL 26, 2024**

Please fill out the form completely

Each poster should be clearly labeled on the back, bottom right corner with the student's **FULL NAME, GRADE, SCHOOL, AND TEACHER'S FULL NAME.**

Teacher's Name: \_\_\_\_\_

School: \_\_\_\_\_

School Address: \_\_\_\_\_

School Telephone No.: \_\_\_\_\_ Grade Level: \_\_\_\_\_

Email Address: \_\_\_\_\_

Total number of entries submitted (please attach list with student names): \_\_\_\_\_

How did you hear about the contest? (Check all that apply.)

School Principal       DOE Newsletter  
 Another Teacher       News Media  
 DWS Website       Other (please specify): \_\_\_\_\_  
 Social Media



By entering the DWS Keiki Water Conservation Poster Contest, you agree to abide by the rules, including allowing DWS to reproduce winning entries.

Prizes will be awarded for 1st place and 2nd place for each grade level entries are received, kindergarten through sixth grade, for up to 14 winners island-wide.

**Mail entries to DWS in Hilo or drop off at one of the following locations by Friday, April 26, 2024:**

Department of Water Supply - Hilo Office  
 (mail or drop off)  
 345 Kekūanaō'a Street, Suite 20  
 Hilo, Hawai'i 96720

Department of Water Supply - Waimea Office  
 (drop off only 8 a.m. to 2 p.m. weekdays, excluding holidays)  
 65-1234 Opelo Road  
 Waimea, Hawai'i 96743

Department of Water Supply - Kona Office  
 (drop off only 8 a.m. to 2 p.m. weekdays, excluding holidays)  
 78-6717 Māmalahoa Highway  
 Hōlualoa, Hawai'i 96725

For questions or more information, contact DWS at (808) 961-8050 or [dws@hawaiidws.org](mailto:dws@hawaiidws.org).