

**County of Hawai'i**  
**DEPARTMENT OF**  
**WATER SUPPLY**  
**8th ANNUAL**  
**Keiki Water Conservation**  
**POSTER**  
**CONTEST**



**How to enter:**

**1**

View "Save Water to Help the Earth" video under the "Conservation" link at [www.hawaiidws.org](http://www.hawaiidws.org).

**2**

Create your **original artwork** (see rules and guidelines below).

**3**

Fill out the attached entry form and submit poster by mail or in-person to the DWS office in Hilo, Kona or Waimea by

**Friday, March 13, 2026.**

**2026 Contest Theme:**

***Make Every Drop Count***

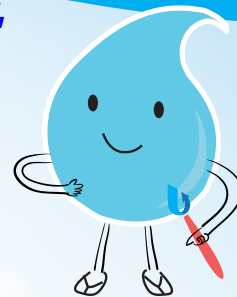
**Who:**

**Open to all Hawai'i County K-6 students**

**What:**

**11" x 17" Water Conservation Poster**

- Horizontal (landscape format), white poster paper
- Any media except chalk, charcoal or oil-based crayon
- Only original artwork (no computer graphics, photographs, 3-D objects) by a single individual (no collaborative work). Plagiarism will result in disqualification.
- Please submit poster flat, not rolled
- Student identification must be **clearly listed** on the back, bottom right corner of the poster, including **Full Name, School, Grade, and Teacher's Full Name**
- Each poster must be submitted with an accompanying entry form (see back of flyer). If a teacher/parent is submitting multiple entries, only one form per grade is needed
- Entries should focus on **fresh drinking water** (not ocean water or bottled water)



**When: By Friday, March 13, 2026**

**Where: Mail or drop off at: Department of Water Supply**

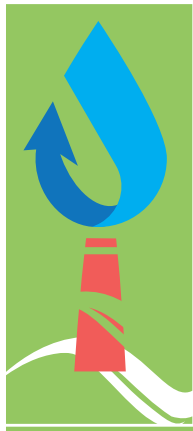
**345 Kekūanaō'a Street, Suite 20, Hilo, HI 96720**

Entries may also be dropped off at DWS offices in Kona or Waimea. See entry form for addresses.

**Why: We all must protect our most precious resource - water**

- Let's learn to conserve our precious water resources for future generations.
- Water is essential for all life and is a limited resource that cannot be replaced.
- Water truly is our most precious resource!

Prizes will be awarded to the top three entries, as chosen by judges, from each grade level. The Department of Water Supply may reproduce winners' names and their entries, which will be announced at a future Water Board meeting. DWS expects to display winning posters at a County venue (the location of which will be determined in the future). Posters may be picked up from the DWS' Hilo Office after June 20, 2026. The office is open from 7:45 a.m. to 4:30 p.m. weekdays, excluding holidays, and is located at 345 Kekūanaō'a Street, Suite 20. Posters not picked up by July 31, 2026, will be discarded. For questions or more information, please contact DWS at (808) 961-8050, visit [www.hawaiidws.org](http://www.hawaiidws.org) or email [dws@hawaiidws.org](mailto:dws@hawaiidws.org).



# County of Hawai'i DEPARTMENT OF WATER SUPPLY

## 8th ANNUAL

## Keiki Water Conservation Poster Contest ENTRY FORM

***DEADLINE: FRIDAY, MARCH 13, 2026***

Please fill out the form completely

Each poster should be clearly labeled on the back, bottom right corner with the student's FULL NAME, GRADE, SCHOOL, AND TEACHER'S FULL NAME.

Teacher's Name: \_\_\_\_\_

School: \_\_\_\_\_

School Address: \_\_\_\_\_

School Telephone No.: \_\_\_\_\_ Grade Level: \_\_\_\_\_

Email Address: \_\_\_\_\_

Total number of entries submitted (please attach list with student names): \_\_\_\_\_

How did you hear about the contest? (Check all that apply.)

_____ School Principal	_____ DOE Newsletter
_____ Another Teacher	_____ News Media
_____ DWS Website	_____ Other (please specify): _____
_____ Social Media	



By entering the DWS Keiki Water Conservation Poster Contest, you agree to abide by the rules, including allowing DWS to reproduce winning entries.

Prizes will be awarded to the top three entries from each grade level, kindergarten through 6th grade.

**Mail entries to DWS in Hilo or drop off at one of the following locations by Friday, March 13, 2026:**

Department of Water Supply - Hilo Office  
(mail or drop off)

345 Kekūanaō'a Street, Suite 20  
Hilo, Hawai'i 96720

Department of Water Supply - Kona Office  
(drop off only 8 a.m. to 2 p.m. weekdays, excluding holidays)

78-6717 Māmalahoa Highway  
Hōlualoa, Hawai'i 96725

Department of Water Supply - Waimea Office  
(drop off only 8 a.m. to 2 p.m. weekdays, excluding holidays)

65-1234 Opelo Road  
Waimea, Hawai'i 96743

For questions or more information, contact DWS at (808) 961-8050 or [dws@hawaiidws.org](mailto:dws@hawaiidws.org).